



ABN : 15 083 240 671

P | 08 8947 3300 F | 08 8947 3311

Unit 1/3A Verinder Road, Berrimah
PO Box 89, Karama NT 0813
E | accounts@jmtbuilders.com.au



Company Profile



Construction, Project Management & Design Solution

Our vision, our aims, our values

JMT BUILDERS Pty Ltd was founded as a Northern Territory company in 1997 by director Brad Hagen and has been active in a wide range of various building projects. We take pride in having established a reputation of reliable and quality builder service to a broad range of clients in the commercial, industrial and remote area work sectors. Our network of satisfied clients and their referrals to new clients make up the core of our business strategy.

Our relationship with our clients is paramount for the duration of the mutual beneficial building process. However, it's not only our clients that receive the same level of respect from us, but our working relationships with our contractors & suppliers, whose ongoing commitment enables us to complete our projects and to satisfy expectations.

JMT Builders work closely and in conjunction with our clients for the duration of the process, from planning stages right through to final hand over, with ongoing open communication on the progressing project. Together we provide a safe and organized on site job environment, to minimize disruption to the clients business, especially if that business is to continue trading during construction.

Capabilities and capacities

JMT Builders can assist with all elements of commercial, industrial and remote area projects from the early planning stages, to preparation of working drawings, through construction, project management and final documentation. For our commercial clients, we not only provide our building services, we can also implement an ongoing program of preventative maintenance. This is an important area as it protects the client's initial investment enabling a longer service life of the equipment, therefore better value for money.

Our intimate knowledge of the building and construction industry has enabled us to complete a diverse range of projects, including design and construct projects, industrial sheds, industrial complexes, office complexes, office extensions, remote area supermarkets & takeaways as well as alterations and extensions in many remote communities. We can provide a complete building service tailored to your building requirements including;

-)] initial concept design development
-)] preliminary drawings
-)] final architectural working drawings with engineering & certification
-)] detailed construction documentation
-)] construction & building
-)] project management
-)] assist in obtaining Certificate of Occupancy

Every project is allocated a project manager, who is the first point of contact, with a support team to draw upon. This manager will be actively involved from design stage, through construction and hand over.

The works for each project are programmed stage by stage and in consideration of client's deadlines, material & manufacturing lead times, seasonal weather and access. These programs are amended to suit the ongoing progress of the project, to ensure they run to schedule. A 'Staged Payment Matrix' is established at the commencement of any project and progress payments will be submitted as the established work stages are completed.

At JMT Builders we have office & working procedures in place to ensure that all projects run as smoothly and carefree as possible for ourselves and our clients.

Mobilization

Our operations are based out of our Office and Workshop in Berrimah, Darwin where our administration & tradesmen work closely with our team of local sub-contractors & suppliers. Various building elements are constructed and manufactured in-house as required, including joinery facilities where panel saw and multiple welders are available for various tasks.

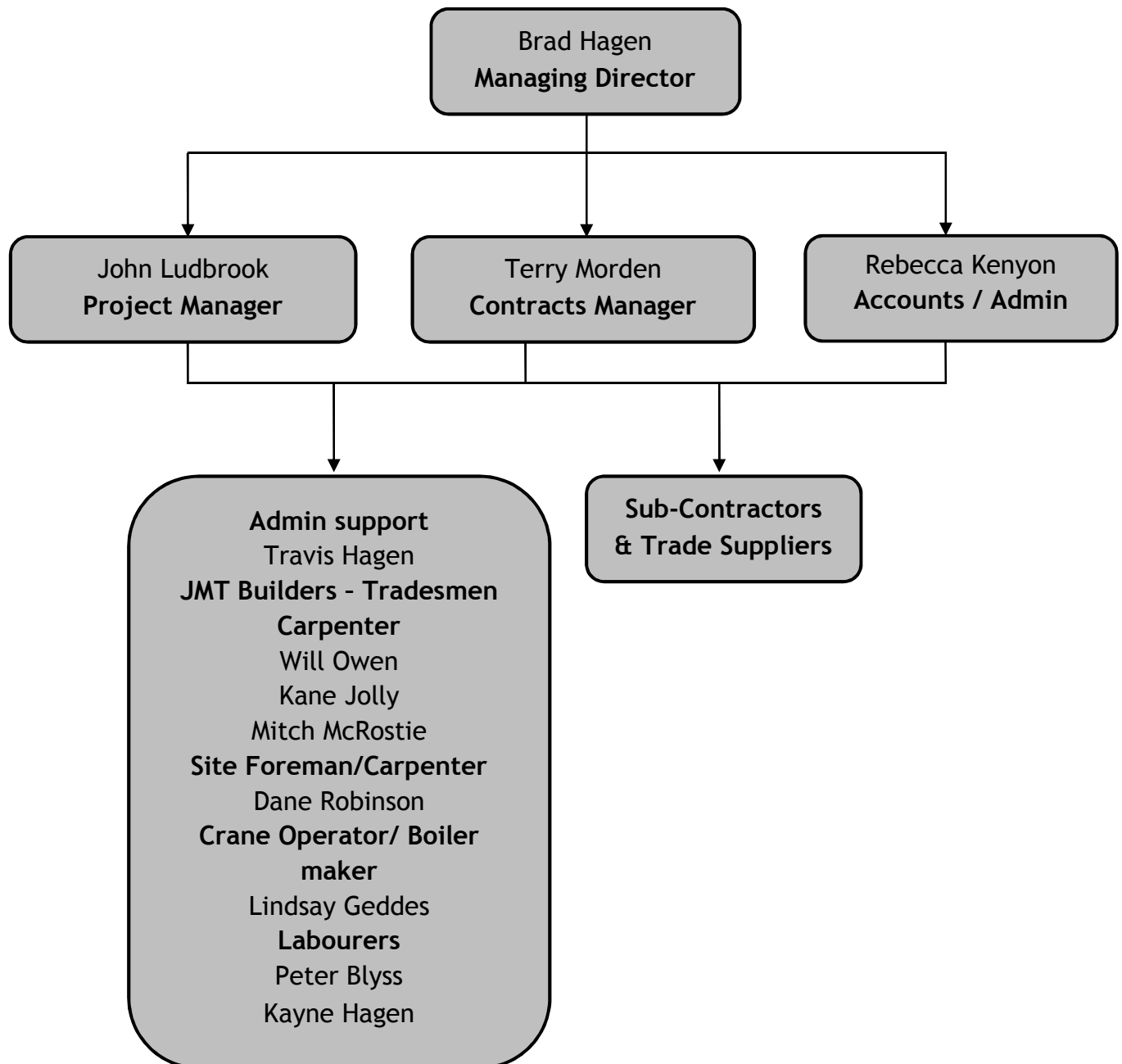
We have an extensive list of reputable contractors and suppliers that extend from Darwin, through Katherine, Tennant Creek and Alice Springs areas, ensuring that we can orchestrate any project in the Northern Territory. We can also complete projects in other states that are close to the Northern Territory borders, including remote WA, SA & QLD.

For the mobilization and administration of projects, we have various vehicles and transport tools to aid in the co-ordination and dispatch as required:-

-) 15 tonne Franna Crane
-) Isuzu 525, 9 tonne GVM truck 7.2m tray
-) 2 x Land Cruiser drop side ute
-) 1 x Land Cruiser wagon
-) 2 x Hilux drop side utes
-) 4.0 tonne forklift
-) 2.5 tonne forklift
-) Kenworth Prime Mover
-) CAT Backhoe
-) 6.5 tonne Manitou all terrain fork lift
-) All terrain scissor lift to 9m
-) Battery operated scissor lift to 8m
-) 45 AJ Knuckle Boom EWP.
-) All-terrain vehicle
-) Shipping Containers
-) Remote Area transportable accommodation camp
-) Remote area communications



The JMT Builders Family Tree



Our experienced staff members draw on a variety of diverse backgrounds within the industry to create the JMT Builders team. We pride ourselves on our close working relationships both in house and with our various contractors & consultants.

Brad Hagen - Managing Director

Brad is originally from Rockhampton, Queensland where he served his apprenticeship as a carpenter and joiner. After a period of time working around Australia he finally settled in Darwin in 1992 and sub contracted to various builders until founding JMT Builders in 1997.

With the expertise & experience to co-ordinate the day to day activities of a building site, as well as the logistics associated with remote area building of purchasing and transport of materials, subcontractors and arranging their accommodation. Brad has the ability and skills to become hands on when required especially when night work is necessary to keep the job on schedule.

His direct and in-direct involvement for the duration of all projects is the key ingredient to their successful completion. The on and off site direction has proven itself time & time again.

John Ludbrook - Project Manager

John is responsible for the estimating and documentation of contracts, general contract administration and problem solving.

John is a qualified carpenter with extensive experience in commercial building in the Northern Territory. He has undertaken project management for the mining industry, for multi-story housing, defence construction projects as well as light and heavy commercial warehouse and office developments.

He has extensive knowledge of all associated trades and the associated certification of these developments.

John has been instrumental in managing and coordinating a number of JMT Builders projects such as the commercial shed at Albatross Street, Winnellie and the Gunbalanya Shop Extension and Renovation.

Terry Morden - Business and Contracts Manager

Terry is responsible for the day to day management of the business and contracts management. Terry has been a business owner for 20 years spanning the building and telecommunication's Industries so he understands what drives business.

Terry is process driven and works to a philosophy that good robust processes equate to good business. A business will be judged by its ability to provide a good product and service. Develop a reputation and customers will find you. JMT has been in business since 1997 and gone through the building booms and busts and in uncertain economic conditions clients want to be reassured they are dealing with a reputable builder.

Rebecca Kenyon - Accounts / Administrator

Rebecca is a highly regarded accounts administrator with many years' experience in all aspects of Business. Rebecca works closely with Terry to provide the back end support for the construction team. She is responsible for the HR administration & accounts management to ensure the company financial records are concise and to allow for quick responses to any accounts enquiries.

Local Projects

JMT Builders have undertaken a variety of building projects, styles & budgets around Darwin. Together with our reputed contractors, tradesman and local suppliers we have completed the following projects in accordance with deadlines and to the satisfaction of our valued clients.

47 Albatross Street, Winnellie.

Project Value \$2.4M.

G & T Hood Nominees

This project involved the co-ordination and construction of a 1600m² single story office and shed structure with gantry crane facility. The construction of the project involved all elements of commercial construction including bulk earthworks, placement of building pad, infrastructure, road works, landscaping and fencing, structural steel erection, roofing and wall cladding, wall framing, installation of roller doors, and the coordination of finishing trades and subcontractors. Working closely with the client and consultants we were able to bring the project in on budget, meeting the lead time and satisfied town planning requirements.



Office & Warehouse Complex 3A Verrinder Road, Darwin.

Project Value \$4.2M

JMT Builders Pty Ltd

This project involved the co-ordination and construction of an 8 warehouse complex. 3 large sheds and 5 smaller sheds all with offices and bathrooms. The project involved bulk civil works, placement of building pad, structural steel erection, roofing and wall cladding, wall framing, installation of roller doors, infrastructure, road works, landscaping, and coordination of finishing trades and subcontractors. All design, fabrication and construction was carried out by JMT Builders.



Mel Rd Warehouses & Garages, Berrimah NT.

Project value \$1.4M.

NT Commercial Developments Pty Ltd.

This project involved the coordination and completion of 8 partially completed warehouses and garages. The project involved all elements of commercial construction and included bulk earthworks, structural steel erection, roofing and wall cladding, wall framing, installation of roller doors, road works, infrastructure, landscaping and fencing and the coordination of subcontractors and finishing trades. Working closely with the client and our subcontractors we were able to deliver a high quality finish, with minimal disruptions all within the contract build time.



ALPA Head Office, East Arm NT.

Project value \$3.4M.

Arnhem Land Progress Aboriginal Corporation

This project involved the co-ordination and construction of a 900m² single story office structure and carpark. This was our biggest project at the time and involved all elements of commercial construction. Bulk earthworks, placement of building pad, infrastructure, road works, landscaping, structural steel erection, roofing, precast panels, wall framing & the coordinating finishing trades and subcontractors. Working closely with our subcontractors, the client and consultants we were able to bring the project in on budget, meeting all deadlines and to the satisfactory of town planning requirements.



Remote Area Projects

JMT Builders have completed many projects in remote territory communities together with our reputed contractors, tradesman and local suppliers. Here are some of our most notable projects.

Gunbalanya Shop Renovation & Extension, Oenpelli NT

Project Value \$4.5m.

Gunbalanya ALPA Store

This project involved the design and construction of a 570m² new extension and a complete renovation and fit out of the original building. A lot of time planning and open communication with the client and engineer were paramount to ensuring the shop stayed operation throughout the construction period. We managed to complete this job with the store losing no trading days, and still provide a high quality finish within the contract time period.



Buthan Shop & House Design & Construct, Elcho Island NT

Project Value \$2.8m.

Buthan ALPA Store - Elcho Island

This project involved the design and construction of a 400m² shop with plant rooms for refrigeration and air-conditioning equipment & the construction of 2 bedroom house with verandah. The project involved clearing of site and bulk earthworks, placement of building pad, mobilization, concrete batching, structural steel erection, roofing and wall cladding, wall framing, installation of roller door, site services infrastructure, fencing & the coordination of subcontractors and finishing trades. Working closely with our subcontractors & the client we were able to complete the job within budget, on time and with minimal disruptions.



Pirlangimpi Shop Extension, Tiwi Island NT

Project Value \$2.3m.

Pirlangimpi ALPA Store

This project involved the design and construction of a 620m² extension and refurbishment of original building. The project involved all areas of remote area including mobilization, civil works, placement of building pad, structural steel erection, roofing, block laying, concrete batching, wall framing, installation of roller doors, and the coordination of subcontractors and finishing trades. Working closely with our subcontractors and the client we were able to keep the store operational throughout the construction period and deliver within budget and on time, with minimal disruptions.



Ramingining - Managers House, Takeaway Extension & Shop Upgrade.

Project value \$1.2M. Arnhem Land Progress Aboriginal Corporation

-)] To design, document & construct a Two Bedroom manager's accommodation.
-)] Extend existing Shop floor, upgrade of finishes, new suspended ceiling & A/C, installation of bulk freezer & cool room and Point of Sale joinery.
-)] Upgrade of Kitchen facilities & equipment with installation of stainless steel work surfaces and internal finishes in accordance with health regulations.
-)] Extend existing store for takeaway, suspended ceiling & A/C, stainless steel display benches & finishing trades.

Kalkarindji - Accommodation to Caravan Park, Takeaway Extension & Shop Upgrade.

Project value \$1.4M. Arnhem Land Progress Aboriginal Corporation

-)] To design, document & construct a 2 x One Bedroom Studio Units accommodation, suitable for relocation within the caravan park.
-)] Extend existing Shop floor, upgrade of finishes, new suspended ceiling & A/C, installation of bulk freezer & cool room and Point of Sale joinery.
-)] Upgrade of Kitchen facilities & equipment with installation of stainless steel work surfaces and internal finishes in accordance with health regulations.
-)] Extend existing store for takeaway, suspended ceiling & A/C, stainless steel display benches & finishing trades.

Additional Remote Area general works include:-

-)] Design and construction of commercial stainless steel kitchens and food preparation areas in remote area supermarkets.
-)] Design and construction of air conditioning to remote area supermarkets.
-)] JMT Builders takes pride in being awarded a special commendation from the Australian Institute of Project Management for the design and construction of the Millingimbi Bakery and Takeaway.



Our valued clients and industry professionals

JMT Builders strives to provide the best possible service to our valued clients to make the designing and construction process as enjoyable and stress free as possible.

However, it's not only our clients that receive our service, but we respect and give thanks to the businesses, suppliers and contractors we continually deal with in order to achieve our finished projects.

As such we highly regard our working relationships and happily offer the below contacts as references for JMT Builders quality of operations & work:-

ALPA - Arnhem Land Progress Aboriginal Corporation

Alastair King (Corporate Manager)

Ph: (08) 8944 6444

alastair.king@alpa.asn.au

We've worked closely with Alastair and the team at ALPA on many of their remote area & town projects. Our close working relationship is a testimony to our skills and service we provide to our clients. Please refer the attached reference for more detail.

Customade Commercial Kitchens (G&T Hood Nominees)

Graham Hood (Director)

Ph. (08) 8981 4626 -

teri@ccknt.com.au

We've worked closely with Graham on many projects and in June 2012 we were approached by Graham to build a 1600m² single story office and shed structure with gantry crane facility at 47 Albatross St Winnellie. Through our many dealings with Graham we have built a strong working relationship by delivering a high level finish on time and on budget.

We look forward to hearing from you soon...



Phone (08) 8947 3300

Fax (08) 8947 3311



1/3A Verrinder Rd
Berrimah NT 0828



PO Box 89
Karama NT 0812



admin@jmtbuilders.com.au

www.jmtbuilders.com.au